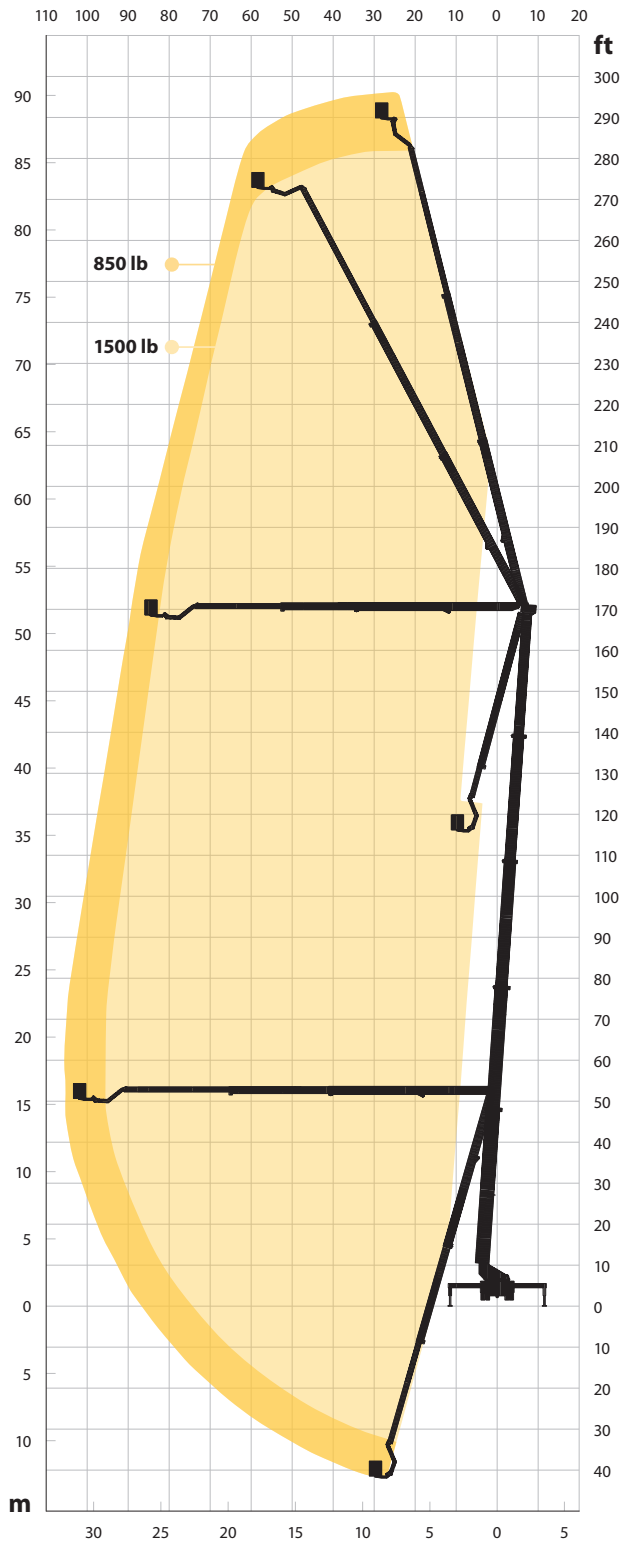




# Bronto Skylift S-HLA



# S295HLA



295 ft



2 x 85°



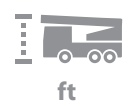
104 ft



360°



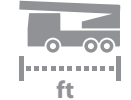
288 ft



13' 6" \*



1500 lb (1300 lb)



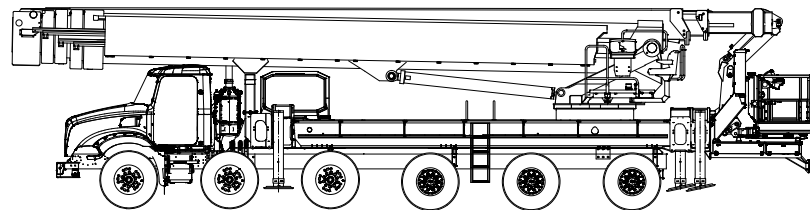
52 ft \*



3' 4" x 7' 9" (12' 1")

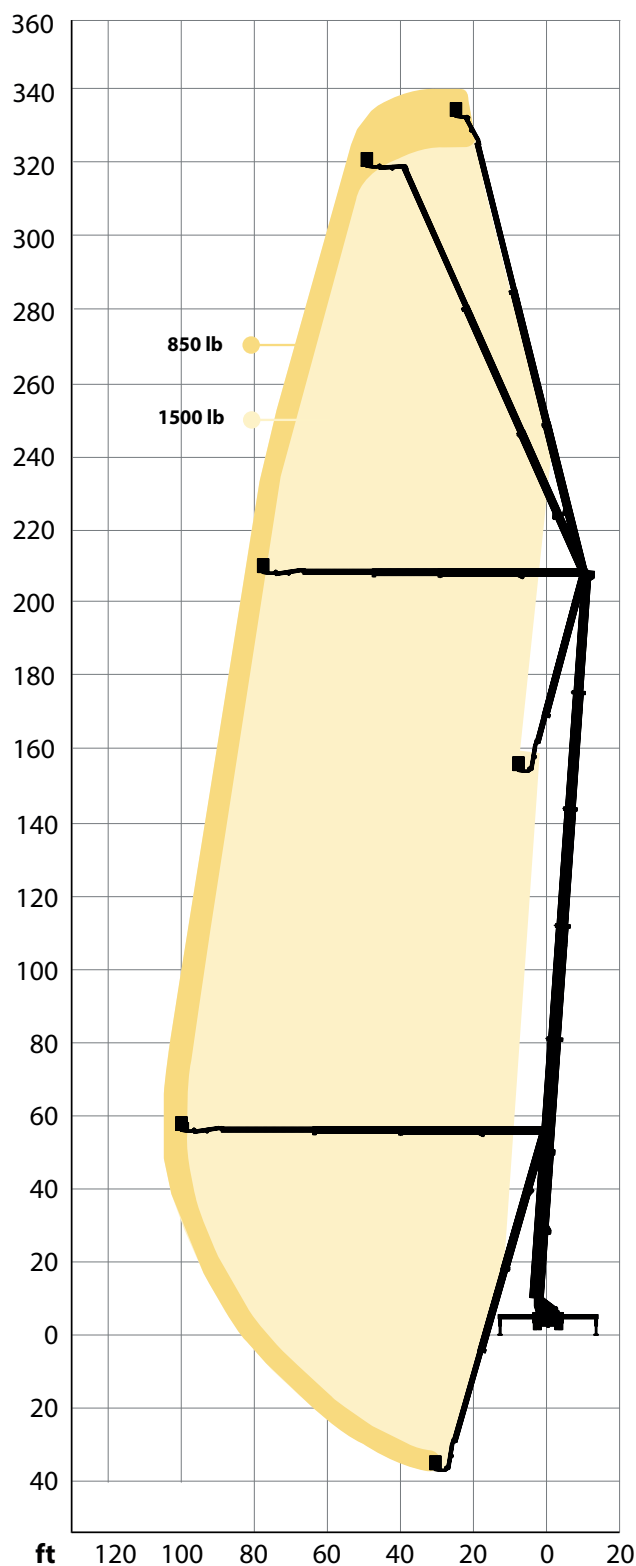


110,000 lb \*



Diagrams presented with standard cage. Drawings with an example configuration and carrier, for reference purpose only. Variations apply. \* depending on the chassis

# S341HLA



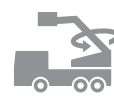
341 ft



2 x 85°



108 ft



360°



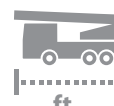
334 ft



13' 6" \*



1500 lb (1300 lb)



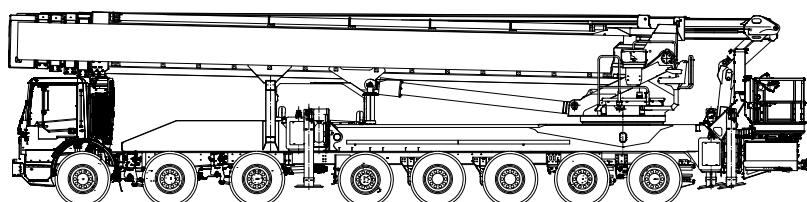
55 ft \*



3' 4" x 7' 9" (12' 1")



140,000 lb \*



Diagrams presented with standard cage. Drawings with an example configuration and carrier, for reference purpose only. Variations apply. \*depending on the chassis



Bronto Skylift is a trusted global supplier of truck-mounted hydraulic platforms. We design, manufacture, sell and service appliances for rescue and firefighting, as well as for industrial access.

Our product range includes approximately 50 models with a range of 55 to 341 feet of working height. The advanced modularity also allows for numerous client-specific modifications. During the past 50 years, we have delivered over 7,000 platform units to fire brigades and industrial customers throughout all the continents in more than 120 countries.

Our headquarters and production plants are situated in Finland. We also have subsidiaries in Germany, Sweden, Switzerland and the US. The company is part of the Japan-based Morita Holdings Corporation.

[sales@brontoskylift.com](mailto:sales@brontoskylift.com)

Technical data and illustrations subject to change without notice.

[www.brontoskylift.com](http://www.brontoskylift.com)