



# Bronto Skylift S35EM







Ideal  
for city  
rental



# Compact, profitable and ready to work

Finally, the real, rugged Bronto work machine is available in a smaller package. The S35EM is all about the ease of use and increased effortlessness it brings to worksites. It has all the elements of a true work machine, yet it's light and compact enough to be easy to manoeuvre and operate.

The S35EM represents the next generation of compact, profitable and rental ready Bronto Skylift aerial platforms. It brings the same tested and trusted way of working to lower level access that Bronto Skylift has provided in the class of higher access platforms for decades.

## S35EM key features

- Cost effective and compact
- Self-drive
- Working height 35 metres, outreach over 29 metres
- Quick deployment
- Easy access to cage
- Big cage capacity



OPTIONS, SIMPLIFIED SELECTION	S EM
<b>DECKING AND STEPS</b>	
Aluminium sides on the decking	
Additional sidelights (Sidelights R48 ECE as std)	
Pull out step for rear of the platform, left/right	
<b>LOCKERS AND SIDEPANELS</b>	
Complete locker for outrigger controls	
Tool box below decking	
Aluminum lockers with roller shutters	
<b>GROUND PADS AND BRACKETS</b>	
4 ground pads with aluminium brackets	
Conductive ground pads	
<b>JACKING SYSTEM</b>	
Automatic, fully variable jacking	
Bronto Loadman for measuring the bearing capacity of ground	
Radio remote control for outriggers	
<b>BACK-UP SYSTEMS FOR HYDRAULICS</b>	
Electric emergency back-up system by a battery pump	
<b>MAIN DRIVE ENGINES</b>	
Hydraulic pump driven by chassis' PTO	
<b>POWER/AIR/WATER SUPPLY AND OUTLETS</b>	
Electricity between turntable and cage, different voltages available	
Air/water supply between the turntable and cage	
Hydraulic outlets in the cage	
Hydraulic outlets and pressure intensifiers	
<b>INTERCOM AND RADIO</b>	
Intercom between the cage and ground control station	
<b>GENERATORS</b>	
Hydraulic generator with different power outputs	
<b>CAGES AND ACCESSORIES</b>	
Tree cutter fence for the cage	
Safety harness attachment points (4pc) according to EN795	
Extendable working cage 0,9 x 2,4 (-3,4) x 1,1 m, SWL 350kg	
Narrow working cage 0,9 x 2,04 x 1,1 m, SWL 500 kg	
Standard working cage 0,9 x 2,40 x 1,1 m, SWL 450 kg	
<b>MATERIAL HANDLING</b>	
Element lifting system, capacity 150 kg.	
<b>BRONTO+ CONTROL SYSTEM</b>	
Engine information and warnings on display	
Telecontrol or Compass remote connection (for warranty period, optional after that)	
Memory function, height and outreach limitations and different user profiles	
Wireless remote control for boom movements	
Service counter and reminders	
High Voltage detector	
<b>BEACONS AND LIGHTS</b>	
Various LED warning beacons and flashing lights	
Various working lights 24V	
<b>CHASSIS</b>	
Reversing camera with 7" color display in the cabin	
Battery charger (DEFA) 2x20A, suitable for battery sizes up to 500Ah	

	Standard
	Available

## Designed for worksites

Finally, the real, rugged Bronto work machine is available in a smaller package.

### Quick and easy to deploy

The S35EM is all about the ease of use and the increased effortlessness it brings to worksites. It has all the elements of a true work machine, yet it's light and compact enough to be easy to manoeuvre and operate.

The transportation length is only 9.5 m and the unit has variable jacking, which makes it ideal for working at inner city sites. Due to the latest technology, the unit is up and functional within minutes. The easy deployment of this self-driven platform makes it an effortless rental machine.

### Quick and easy to access

The elevators in skyscrapers don't leave you a metre or two from the ground, nor should your work platform. With the S35EM, you can lower the working cage all the way to the ground, which enables easy loading and unloading of men and material. Moreover, in the transport position, the cage is easy to ascend via a landing stage with pull-down steps.

To enable you to carry all the needed gear, the maximum cage load is as high as 500 kg. If it's more space that you need instead of a huge load, there are three cage solutions to choose from. The biggest, extendable cage can be extended up to 3.4 metres wide.

### Optional equipment

Optional equipment for S35EM include, for example, hydraulics and electricity in the cage, hydraulic material winch (max. load 150 kg), multipurpose bracket in front of the cage, material lockers, detachable operator protection and ultrasonic collision guard.

### Three spacious cage options

- Standard: load 450kg, width 2,40m
- Narrow\*: load 500kg, width 2,04m
- Extendable\*: load 350kg, max. width 3,40m

\* optional













## Added safety and efficiency

High safety does not decrease the efficiency, it does the opposite.

### Control system for added safety and ease

Safety is about creating a safer working environment. An advanced control system increases the safety on your worksites by letting you focus on the job at hand.

The unit includes a 5th generation Bronto+ control system that provides precise and stable movements. It has a resistive touch screen and is very simple and smooth to operate.

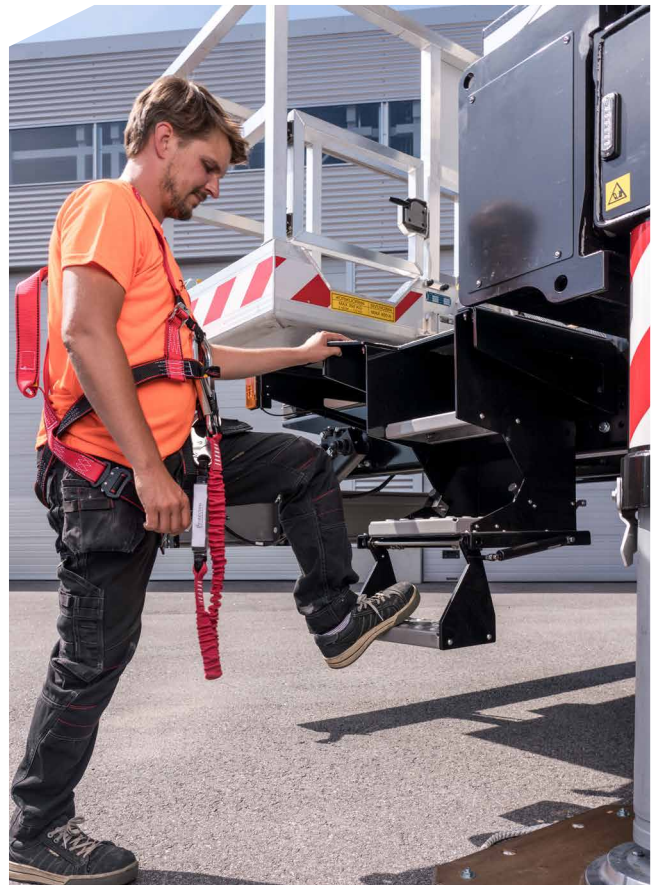
For added safety, the cage control centre has also a crushing hazard protection for the operator.

### Ideal rental solution

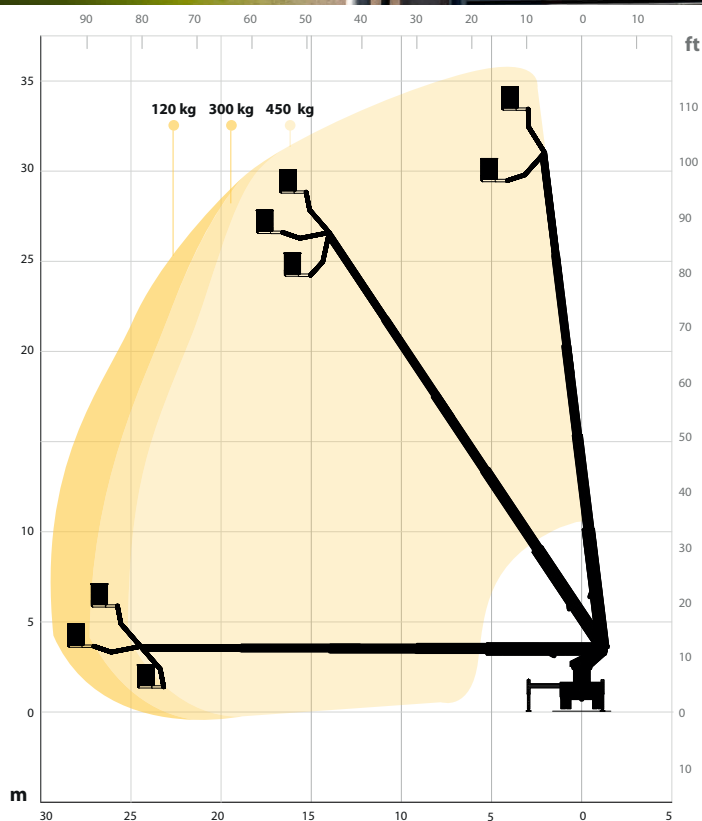
As a self-drive unit that is quick and easy to deploy on site, the S35EM is ideal for rental utilisation and inner city work.

It is very cost effective and compact yet gives all the benefits of a true aerial work platform; the reach and range to the job and the big cage with a proper load and optional gear to get the job done quickly and efficiently.

At the end of the day, that's why it's there. Serving the workers to get the job done.







Variations apply.

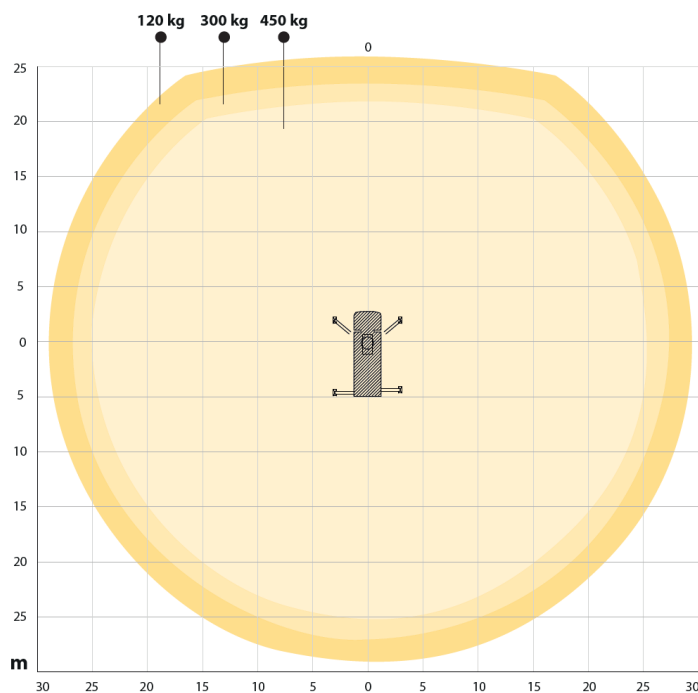
## Everyday ergonomics

The entrance to the working cage from the ground or from the deck has been designed with your safety and ergonomics in mind. The pull down steps to the deck have gas springs for effortless use. The deck has a separate landing stage to make loading the cage easy and ergonomic while in the transport position. For the very same reason, the working cage of the S35EM can be lowered all the way to the ground level.

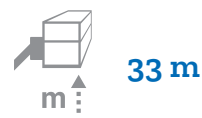
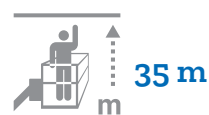
## Professional service offering

The high-quality platform is backed up by Bronto Skylift's customer service and local support. Bronto Compass is a flexible and versatile remote diagnostic system which enables accurate, real-time problem solving in difficult and unexpected situations. In case of a fault or malfunction, Bronto Skylift can support the operator or maintenance personnel by providing remote help for diagnosis, calibration and the necessary adjustments of the platform.





Variations apply.



\* depending on chassis





## It's all about the uptime

With the Bronto Skylift service tools you can maximise your uptime and reduce maintenance cost.

### We back you up

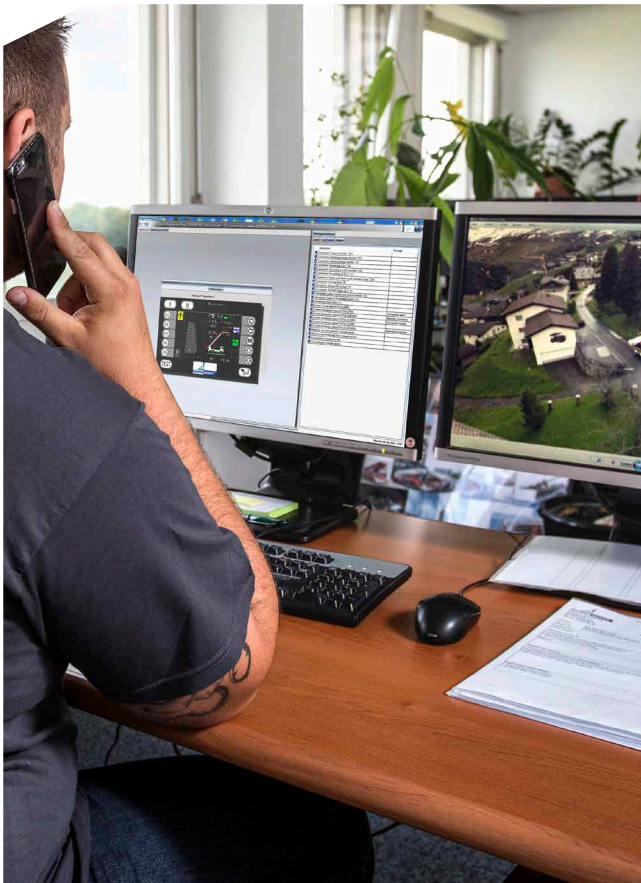
We want your machines to run at the best possible rate and keep their residual value. That's why we back you up from the first day throughout your platform's life cycle. When buying a new Bronto Skylift unit, you can trust that its spare parts will be available for at least the next 25 years.

### Advanced remote support

We may not always be there with you, but we are always there for you. When you need accurate real-time problem-solving in an unexpected situation, a versatile remote diagnostics system allows our service professionals to open a connection with your Bronto. Faults and their causes can then be rapidly identified, analysed and corrected, limiting downtime and reducing unnecessary costs.

### Service agreements

With the Bronto Service agreement, you can be sure your Bronto equipment is kept in the best possible shape for its entire life cycle. The content of our mutual agreement is fully customised according to your needs and wishes. The widest service network in the industry keeps you backed up wherever you are.





# Bronto One

## More than fleet management

Bronto One is a cloud-based portal for managing fleets and operations – a single source for all critical information. It's your single point of entry to Bronto Skylift's lifecycle services, wherever you are.

Available in three levels, Basic, Plus and Pro, Bronto One includes features from fleet management, training, worksite planning, reporting and more to streamline your operations for best performance. Basic level is free for everyone with a Bronto aerial platform in their fleet.

### Bronto One Basic

**Bronto One Basic** provides you with an overview of your Brontos by consolidating basic unit information, manuals, info bulletins and service logs into one online hub. Get easy, instant access to these digital materials across your organisation – anytime, anywhere.

Bronto One Basic is free for all Bronto Skylift's customers.

Basic

### Bronto One Plus

**Bronto One Plus** enables the usage data and analytics, as well as remote access to your aerial(s) for fast and accurate remote support. The usage data, analytics and insights help you reduce emissions, optimise fleet usage, and plan preventive services for maximum uptime.

Bronto One Plus is free during your warranty period.

Plus

### Bronto One Pro

**Bronto One Pro** includes all the features in Bronto One Plus but expands on them with a powerful suite of worksite management and planning tools. It makes worksite information easily available in the office and at the worksites and provides you with powerful 3D planning tool, Bronto Duties.

Pro



Bronto Skylift is a trusted global supplier of truck-mounted hydraulic platforms. We design, manufacture, sell and service appliances for rescue and firefighting as well as for construction work.

Our product range includes approximately 50 models with a range of 17 to 112 metres of working height. The advanced modularity also allows for numerous client-specific modifications. During the past 50 years, we have delivered over 7,000 platform units to fire brigades and industrial customers throughout all the continents in more than 120 countries.

Our headquarters and production plants are situated in Finland. We also have subsidiaries in Germany, Sweden, Switzerland and the US. The company is part of the Japan-based Morita Holdings Corporation.

[sales@brontoskylift.com](mailto:sales@brontoskylift.com)

Technical data and illustrations subject to change without notice.

[www.brontoskylift.com](http://www.brontoskylift.com)