

Bronto Skylift F22RL

COMPACT RESCUE PLATFORM



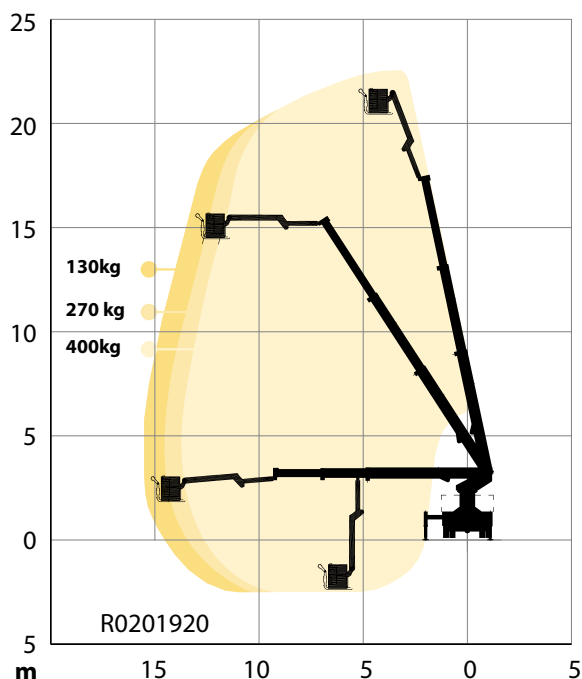
Compact aerial ladder platform with integrated waterway

The 22 meter F22RL represents one of the smallest and most compact Bronto Skylift aerial platforms. It has an integrated water line, user-friendly control system, one button automatic leveling and an excellent height to weight ratio. All this combined to a very small total width makes it a handy tool for efficient rescue and firefighting in narrow streets and tight places.

F22RL key features

- Compact design
- Transport length less than 7 m
- Vehicle width only 2.3 m*
- Integrated waterline
- Excellent height to weight ratio
- Automatic levelling
- User friendly Bronto 5+ control system
- Modern service tools and a wide service network

F22RL



22 m



15.5 m



400 kg



5.9 m



3.4 m*



< 7 m*



16 t*



2,500 l/min

Diagrams presented with standard configuration. Variations apply.

* depending on chassis



sales@brontoskylift.com

Technical data and illustrations subject to change without notice.

www.brontoskylift.com